

© 2013 Microsoft Corporation © 2013 DigitalGlobe © CNES (2013) Distribution Airbus DS © 2013 HERE



Figure 1 - Traffic Noise Study Overview
I-94 UBOL Resurfacing Maple Grove to Rogers and Brockton Interchange
 S.P. 2780-97
 MnDOT and City of Dayton, Minnesota



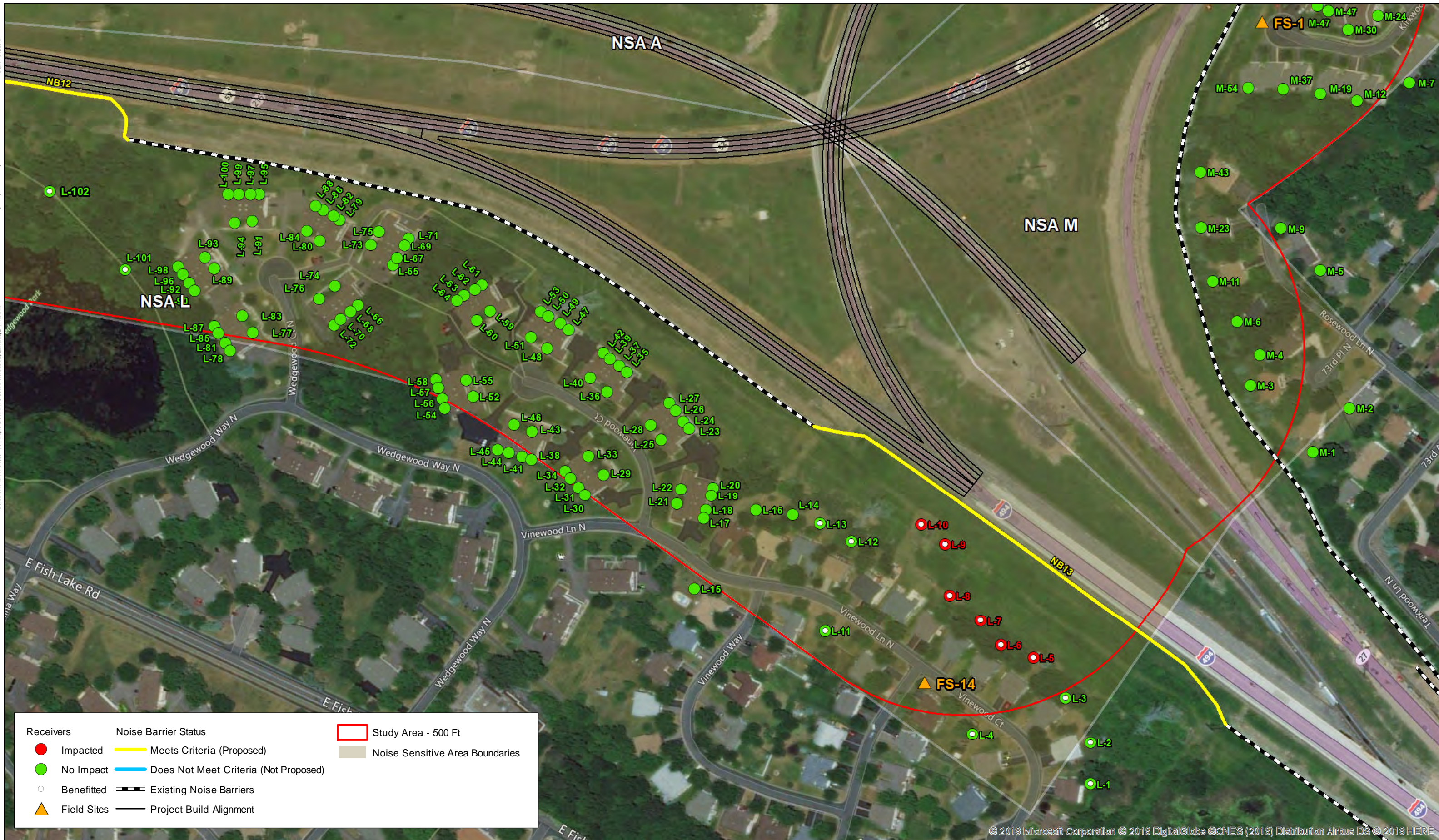


Figure 2 - Traffic Noise Study
I-94 UBOL Resurfacing Maple Grove to Rogers and Brockton Interchange
 S.P. 2780-97
 MnDOT and City of Dayton, Minnesota

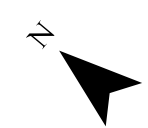
Date: 11/16/2018
 Author: Jennifer Rybarczyk, HNTB Corporation
 Document Path: N:\91509 - I-94 Maple Grove MNGIS\MSD\ReceiverMap_ExtraMap_111618.mxd

© 2013 Microsoft Corporation © 2013 DigitalGlobe © CNES (2013) Distribution Airbus DS © 2013 HERE

Date: 11/16/2018
 Author: Jennifer Rybarczyk, HNTB Corporation
 Document Path: N:\91509 - I-94 Maple Grove MNGS\WCD\ReceiverMap_ExtraMap_111418.mxd



© 2013 Microsoft Corporation © 2013 DigitalGlobe © CNES (2013) Distribution Airbus DS © 2013 HERE



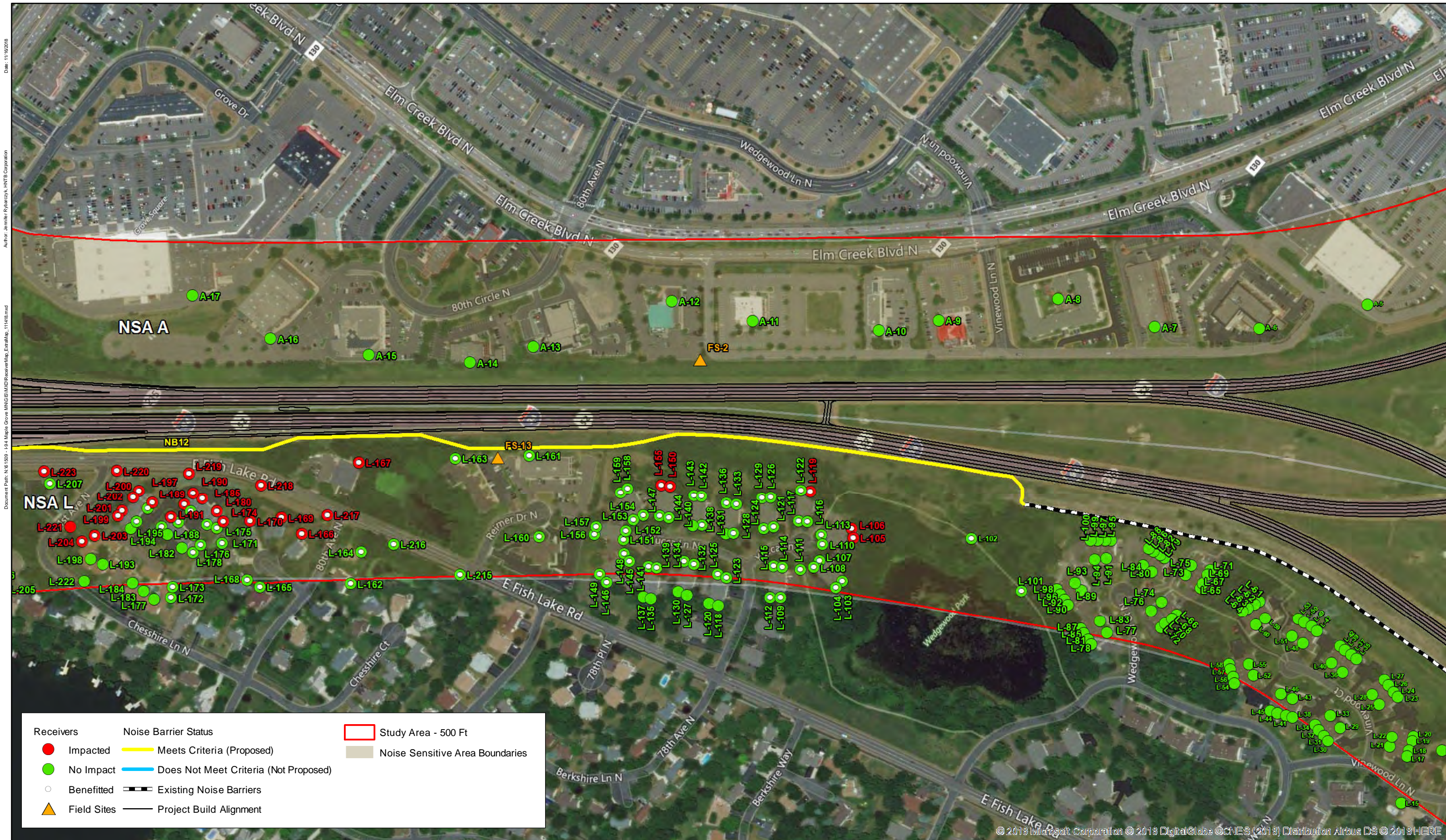
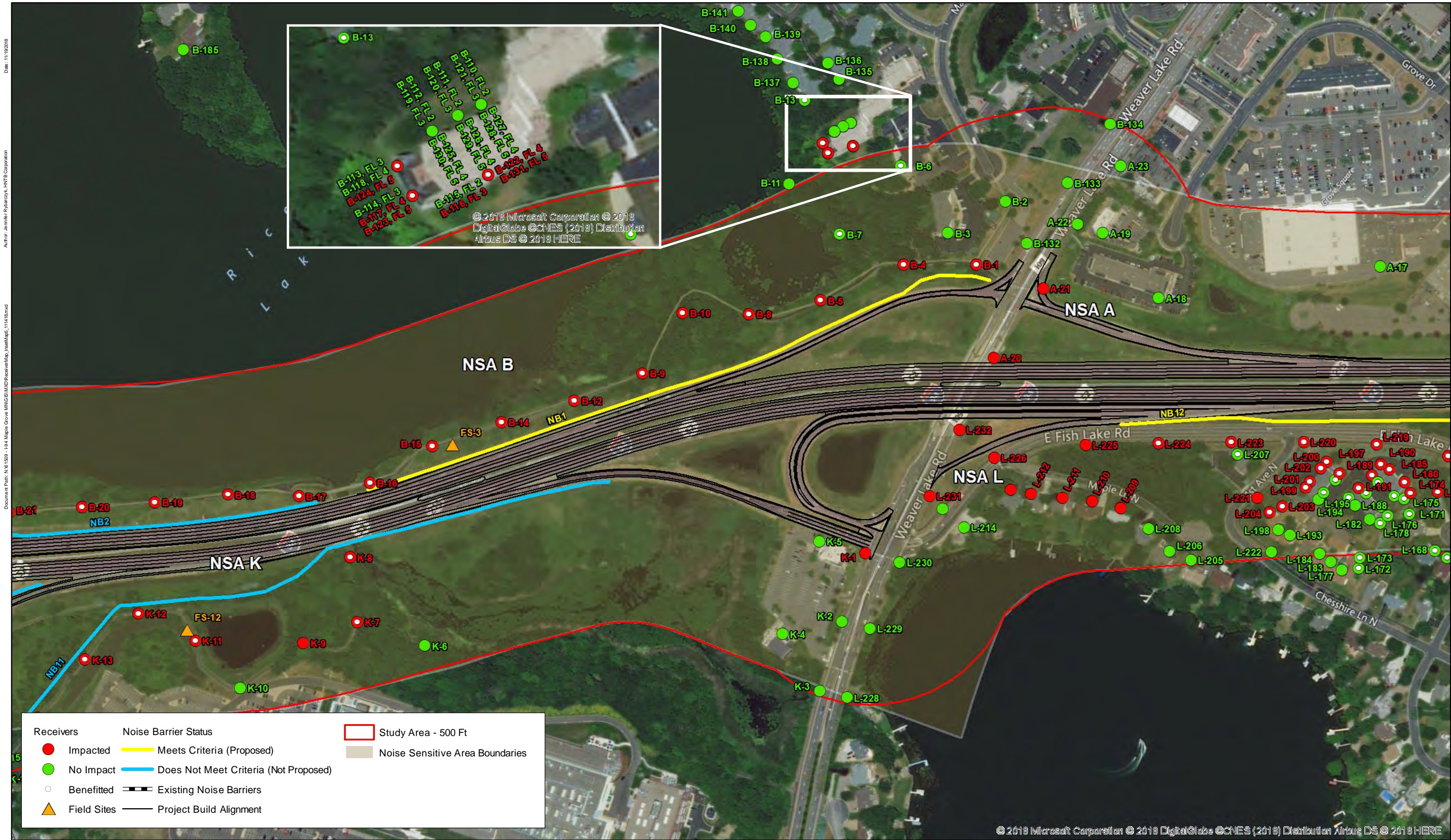


Figure 4 - Traffic Noise Study
I-94 UBOL Resurfacing Maple Grove to Rogers and Brockton Interchange
 S.P. 2780-97
 MnDOT and City of Dayton, Minnesota

Date: 11/16/2018
 Author: Jennifer Rybarczyk, HNTB Corporation
 Document Path: N:\91509 - I-94 Maple Grove MNGIS\MXD\ReceiverMap_111618.mxd

© 2013 Microsoft Corporation © 2013 DigitalGlobe © CNES (2013) Distribution Airbus DS © 2013 HERE

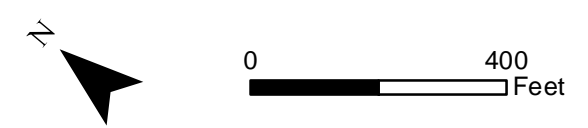


Date: 11/19/2018

Author: Jennifer Rybarczyk, HNTB Corporation

Document Path: N:\91509 - I-94 Maple Grove MNG\SIS\WCD\ReceiverMap_111418.mxd

Figure 5 - Traffic Noise Study
I-94 UBOL Resurfacing Maple Grove to Rogers and Brockton Interchange
 S.P. 2780-97
 MnDOT and City of Dayton, Minnesota



© 2018 Microsoft Corporation © 2018 DigitalGlobe © CNES (2018) Distribution Airbus DS © 2018 HERE



Figure 6 - Traffic Noise Study
I-94 UBOL Resurfacing Maple Grove to Rogers and Brockton Interchange
 S.P. 2780-97
 MnDOT and City of Dayton, Minnesota

Date: 11/16/2018
 Author: Jennifer Rybarczyk, HNTB Corporation
 Document Path: N:\91509 - I-94 Maple Grove MNGIS\WCD\ReceiverMap_ExtraMap_111618.mxd

© 2013 Microsoft Corporation © 2013 DigitalGlobe © CNES (2013) Distribution Airbus DS © 2013 HERE

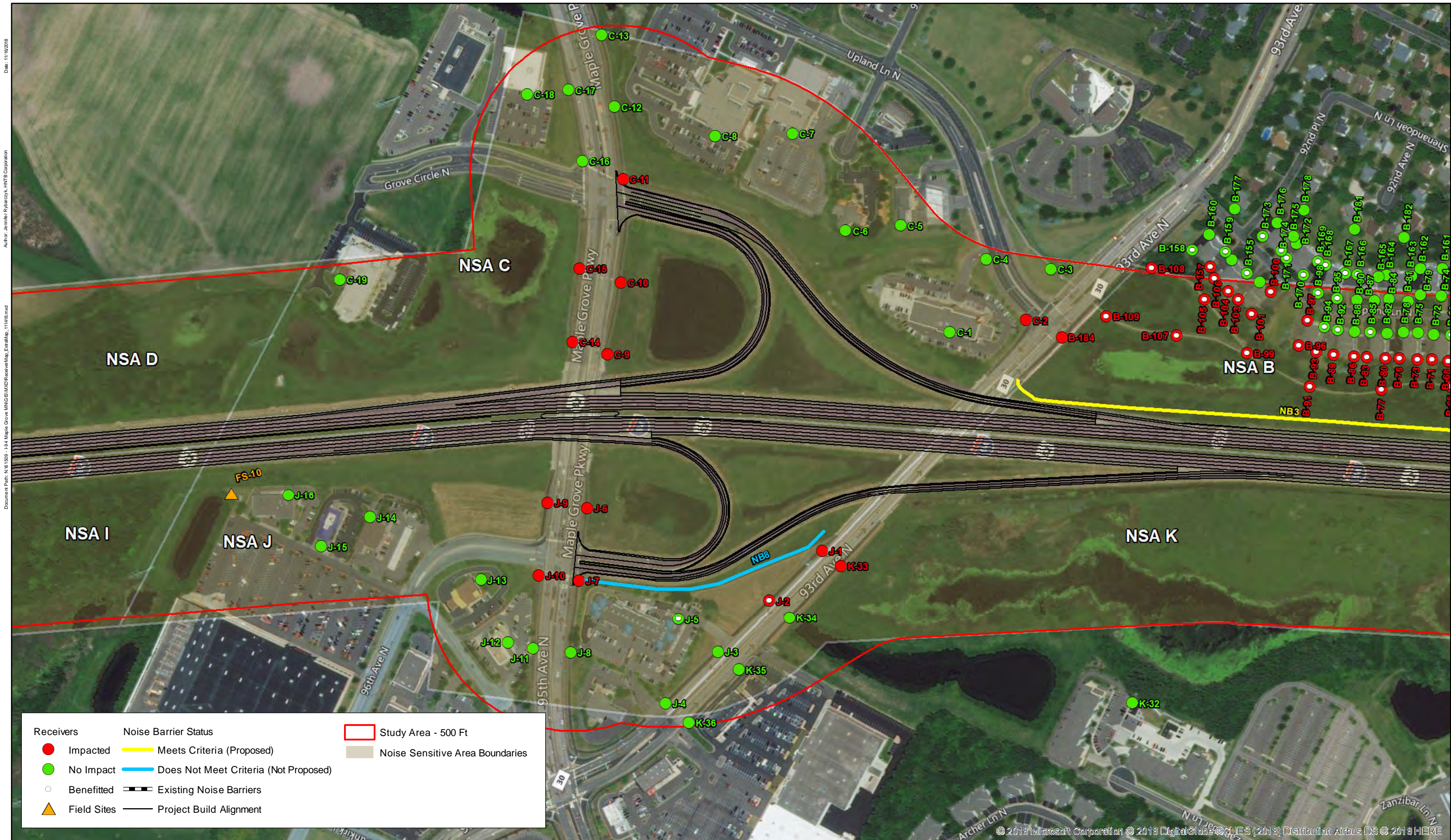


Figure 7 - Traffic Noise Study
I-94 UBOL Resurfacing Maple Grove to Rogers and Brockton Interchange
 S.P. 2780-97
 MnDOT and City of Dayton, Minnesota

Date: 11/16/2018
 Author: Jennifer Rybarczyk, HNTB Corporation
 Document Path: N:\S1509 - I-94 Maple Grove MNGSIS\Map\ReceiverMap_111618.mxd

© 2013 Microsoft Corporation © 2013 DigitalGlobe © 2013 ESRI © 2013 HERE

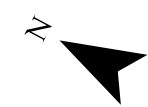
Date: 11/16/2018
Author: Jennifer Rybarczyk, HNTB Corporation
Document Path: N:\91509 - I-94 Maple Grove MNGIS\WCD\ReceiverMap_ExtraMap_111418.mxd



© 2013 Microsoft Corporation © 2013 DigitalGlobe © CNES (2013) Distribution Airbus DS © 2013 HERE



Figure 8 - Traffic Noise Study
I-94 UBOL Resurfacing Maple Grove to Rogers and Brockton Interchange
S.P. 2780-97
MnDOT and City of Dayton, Minnesota



Date: 11/16/2018
 Author: Jennifer Rybarczyk, HNTB Corporation
 Document Path: N:\971509 - I-94 Maple Grove MNGIS\WCD\ReceiverMap_ExtraMap_111618.mxd

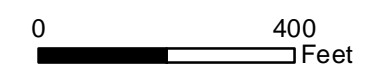
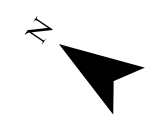


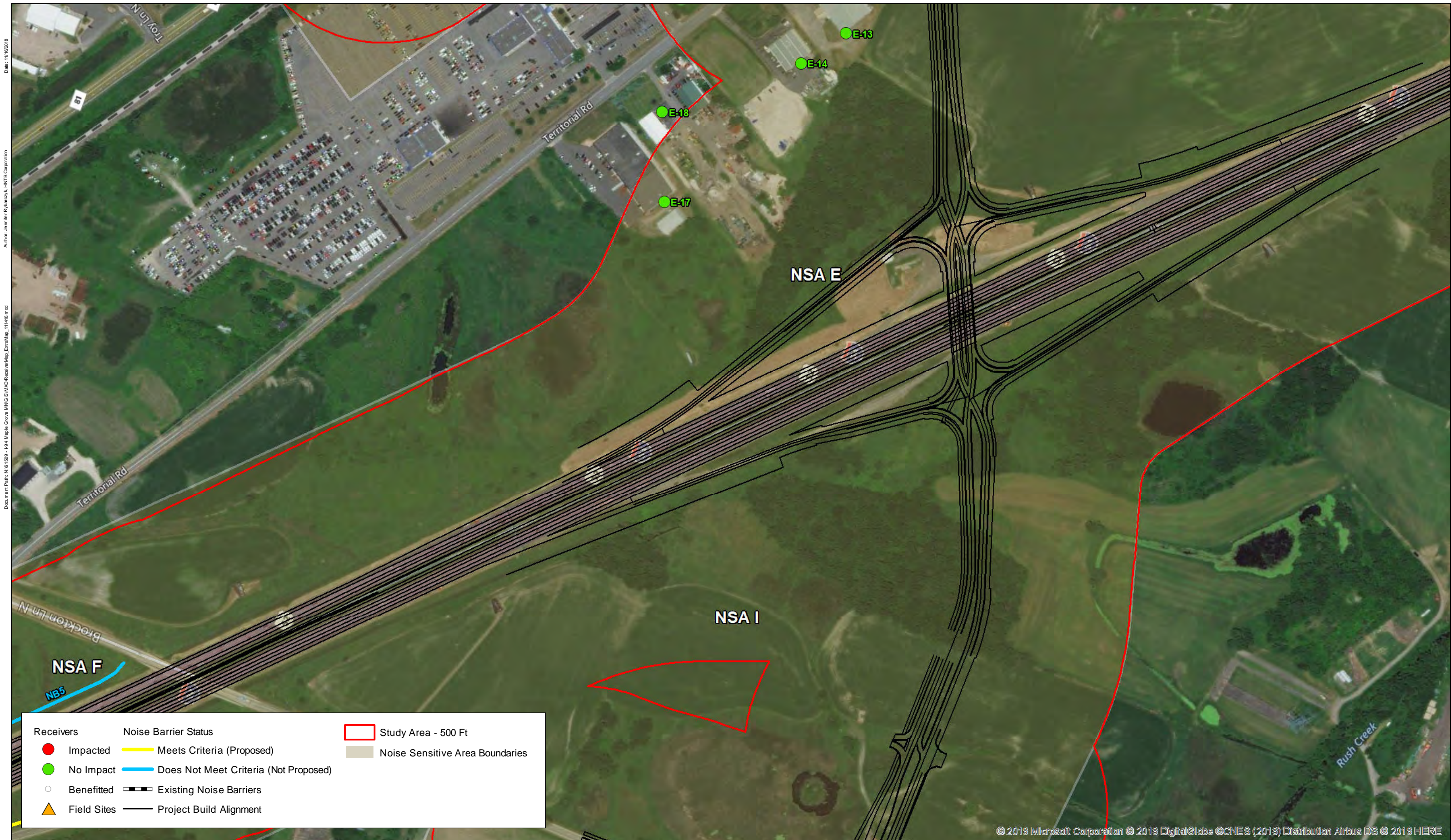
| Receivers | | Noise Barrier Status | | Study Area - 500 Ft |
|------------|-------------|----------------------|---------------------------------------|---------------------|
| ● (Red) | Impacted | — (Yellow) | Meets Criteria (Proposed) | ▭ (Red) |
| ● (Green) | No Impact | — (Blue) | Does Not Meet Criteria (Not Proposed) | ▭ (Grey) |
| ○ (White) | Benefitted | — (Black dashed) | Existing Noise Barriers | ▭ (Light Grey) |
| ▲ (Yellow) | Field Sites | — (Black solid) | Project Build Alignment | |

© 2013 Microsoft Corporation © 2013 DigitalGlobe © CNES (2013) Distribution Airbus DS © 2013 HERE



Figure 9 - Traffic Noise Study
I-94 UBOL Resurfacing Maple Grove to Rogers and Brockton Interchange
 S.P. 2780-97
 MnDOT and City of Dayton, Minnesota





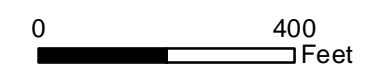
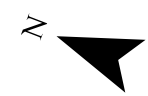
Date: 11/19/2018
 Author: Jennifer Rybarczyk, HNTB Corporation
 Document Path: N:\91509 - I-94 Maple Grove MNGIS\MXD\ReceiverMap_ExtraMap_111418.mxd

| Receivers | Noise Barrier Status | Study Area - 500 Ft |
|---------------|---|-----------------------------------|
| ● Impacted | — Meets Criteria (Proposed) | ■ Noise Sensitive Area Boundaries |
| ● No Impact | — Does Not Meet Criteria (Not Proposed) | |
| ○ Benefitted | --- Existing Noise Barriers | |
| ▲ Field Sites | — Project Build Alignment | |

© 2013 Microsoft Corporation © 2013 DigitalGlobe © CNES (2013) Distribution Airbus DS © 2013 HERE



Figure 10 - Traffic Noise Study
I-94 UBOL Resurfacing Maple Grove to Rogers and Brockton Interchange
 S.P. 2780-97
 MnDOT and City of Dayton, Minnesota

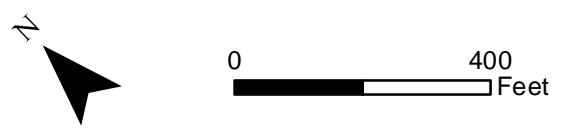




Date: 11/19/2018
 Author: Jennifer Rybarczyk, HNTB Corporation
 Document Path: N:\91509 - I-94 Maple Grove MNGIS\WCD\ReceiverMap_ExtraMap_111418.mxd

| Receivers | Noise Barrier Status | Study Area - 500 Ft |
|---------------|---|-----------------------------------|
| ● Impacted | — Meets Criteria (Proposed) | ▭ Noise Sensitive Area Boundaries |
| ● No Impact | — Does Not Meet Criteria (Not Proposed) | |
| ○ Benefitted | ▬ Existing Noise Barriers | |
| ▲ Field Sites | — Project Build Alignment | |

Figure 11 - Traffic Noise Study
I-94 UBOL Resurfacing Maple Grove to Rogers and Brockton Interchange
 S.P. 2780-97
 MnDOT and City of Dayton, Minnesota



© 2013 Microsoft Corporation © 2013 DigitalGlobe © CNES (2013) Distribution Airbus DS © 2013 HERE

Date: 11/16/2018
 Author: Jennifer Rybarczyk, HNTB Corporation
 Document Path: N:\91509 - I-94 Maple Grove MNGIS\WCD\ReceiverMap_ExtraMap_111418.mxd

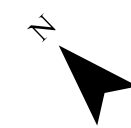


| Receivers | Noise Barrier Status | Study Area - 500 Ft |
|---------------|---|-----------------------------------|
| ● Impacted | — Meets Criteria (Proposed) | ■ Noise Sensitive Area Boundaries |
| ● No Impact | — Does Not Meet Criteria (Not Proposed) | |
| ○ Benefitted | --- Existing Noise Barriers | |
| ▲ Field Sites | — Project Build Alignment | |

© 2013 Microsoft Corporation © 2013 DigitalGlobe © CNES (2013) Distribution Airbus DS © 2013 HERE



Figure 12 - Traffic Noise Study
I-94 UBOL Resurfacing Maple Grove to Rogers and Brockton Interchange
 S.P. 2780-97
 MnDOT and City of Dayton, Minnesota



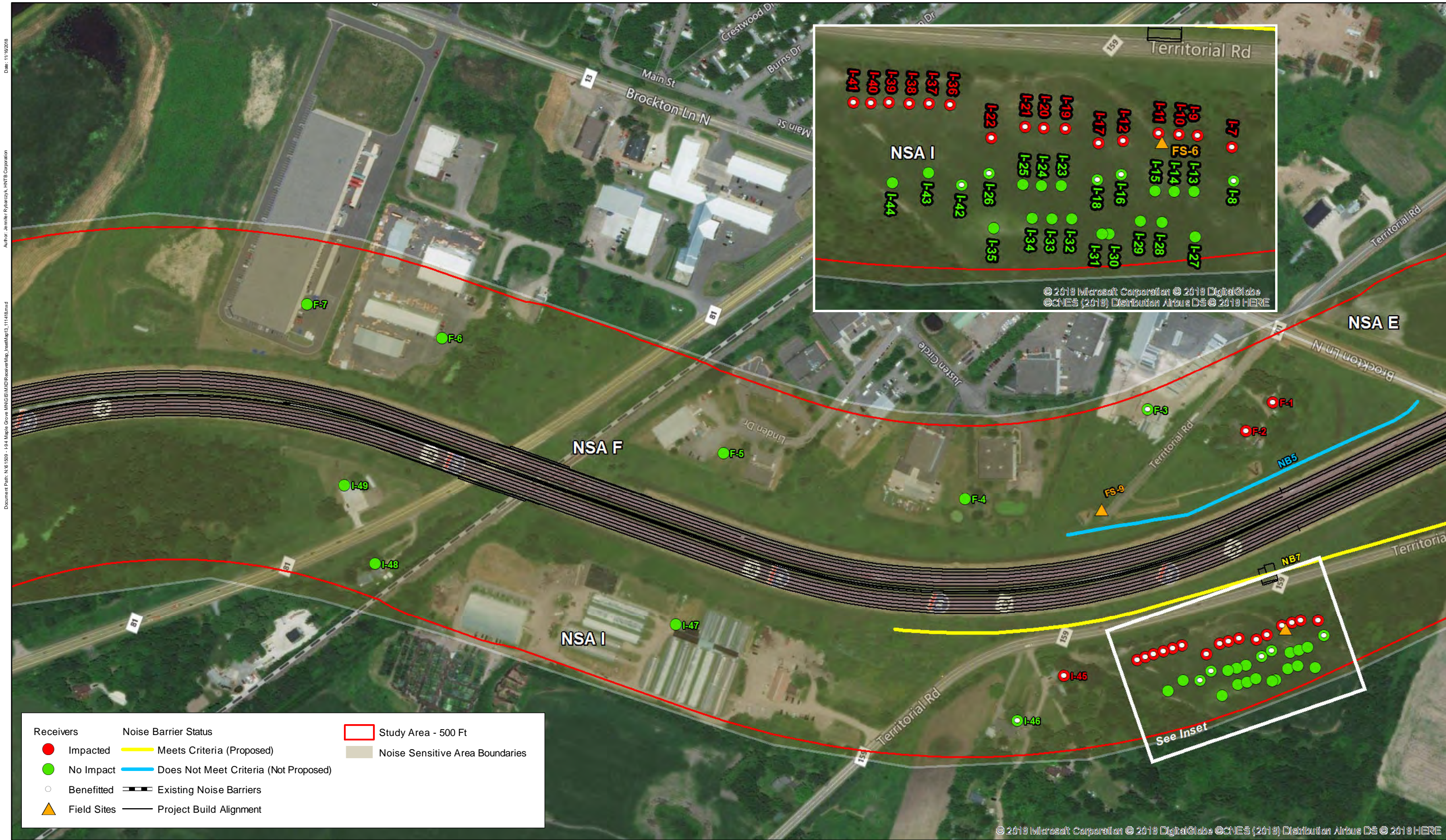


Figure 13 - Traffic Noise Study
I-94 UBOL Resurfacing Maple Grove to Rogers and Brockton Interchange
 S.P. 2780-97
 MnDOT and City of Dayton, Minnesota

Date: 11/16/2018
 Author: Jennifer Rybarczyk, HNTB Corporation
 Document Path: N:\91509 - I-94 Maple Grove MNGIS\WCD\ReceiverMap_JustenMap13_111416.mxd

© 2018 Microsoft Corporation © 2018 DigitalGlobe © CNES (2018) Distribution Airbus DS © 2018 HERE

Date: 11/16/2018
 Author: Jennifer Rybarczyk, HNTB Corporation
 Document Path: N:\91509 - I-94 Maple Grove MNGIS\MXD\ReceiverMap_ExtraMap_111418.mxd

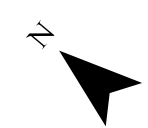


| Receivers | | Noise Barrier Status | | Study Area - 500 Ft |
|------------|-------------|----------------------|---------------------------------------|---------------------|
| ● (Red) | Impacted | — (Yellow) | Meets Criteria (Proposed) | □ (Red) |
| ● (Green) | No Impact | — (Blue) | Does Not Meet Criteria (Not Proposed) | □ (Tan) |
| ○ (White) | Benefitted | — (Black Dashed) | Existing Noise Barriers | — (Black Solid) |
| ▲ (Yellow) | Field Sites | — (Black Solid) | Project Build Alignment | |

© 2013 Microsoft Corporation © 2013 DigitalGlobe © CNES (2013) Distribution Airbus DS © 2013 HERE



Figure 14 - Traffic Noise Study
I-94 UBOL Resurfacing Maple Grove to Rogers and Brockton Interchange
 S.P. 2780-97
 MnDOT and City of Dayton, Minnesota



Date: 11/16/2018
 Author: Jennifer Rybarczyk, HNTB Corporation
 Document Path: N:\91509 - I-94 Maple Grove MNGIS\MXD\ReceiverMap_111418.mxd

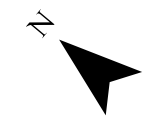


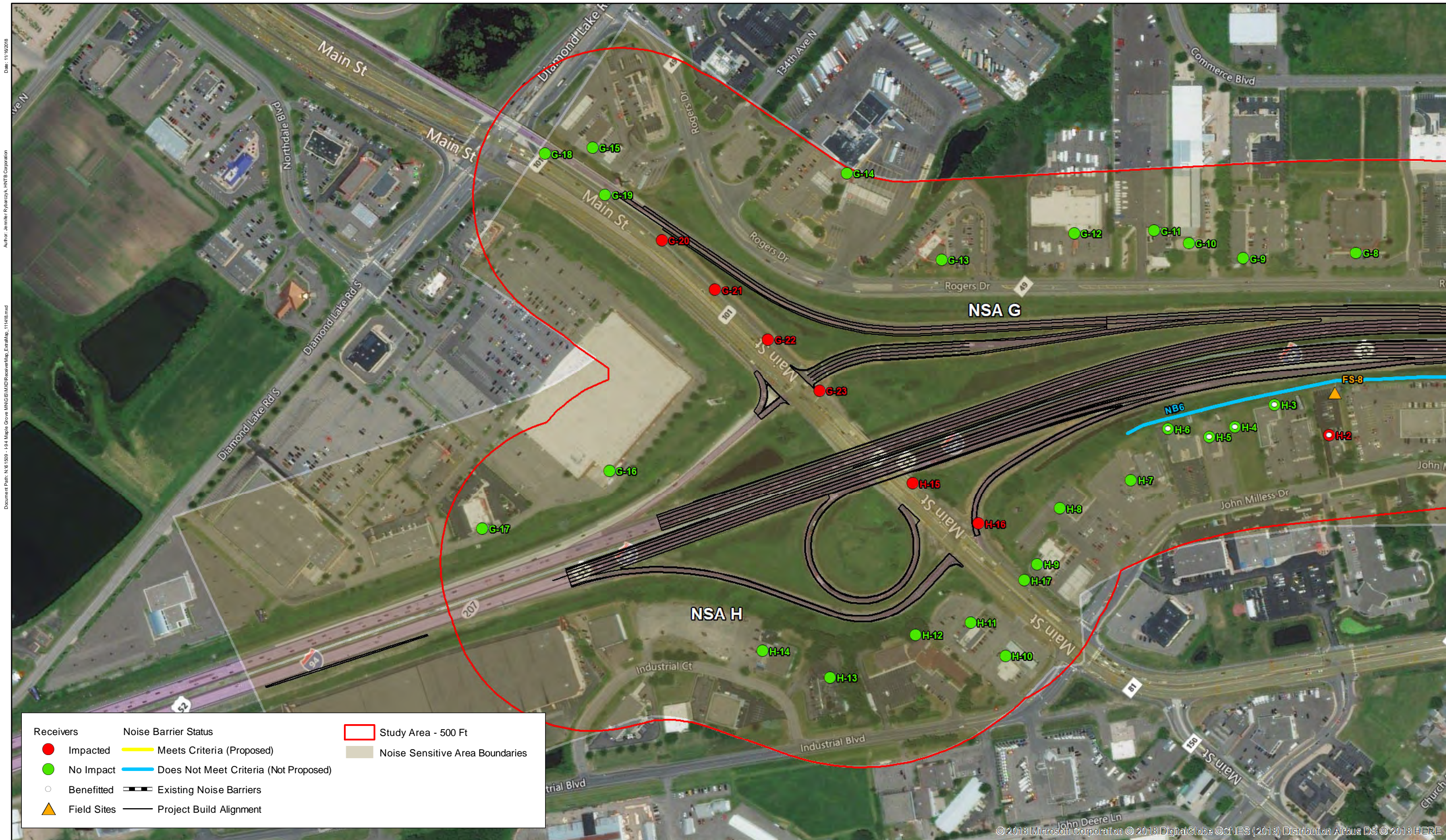
| | | |
|------------------|---|-----------------------------------|
| Receivers | Noise Barrier Status | Study Area - 500 Ft |
| ● Impacted | — Meets Criteria (Proposed) | ▭ Noise Sensitive Area Boundaries |
| ● No Impact | — Does Not Meet Criteria (Not Proposed) | |
| ○ Benefitted | — Existing Noise Barriers | |
| ▲ Field Sites | — Project Build Alignment | |

© 2013 Microsoft Corporation © 2013 DigitalGlobe © CNES (2013) Distribution Airbus DS © 2013 HERE



Figure 15 - Traffic Noise Study
I-94 UBOL Resurfacing Maple Grove to Rogers and Brockton Interchange
 S.P. 2780-97
 MnDOT and City of Dayton, Minnesota





Date: 11/16/2018
 Author: Jennifer Rybarczyk, HNTB Corporation
 Document Path: N:\91509 - I-94 Maple Grove MNGIS\MapDocs\ReceiverMap_ExtraMap_111618.mxd

| Receivers | Noise Barrier Status | Study Area - 500 Ft |
|---------------|---|-----------------------------------|
| ● Impacted | — Meets Criteria (Proposed) | □ Noise Sensitive Area Boundaries |
| ● No Impact | — Does Not Meet Criteria (Not Proposed) | |
| ○ Benefitted | ▬ Existing Noise Barriers | |
| ▲ Field Sites | ▬ Project Build Alignment | |

© 2013 Microsoft Corporation © 2013 DigitalGlobe © CNES (2013) Distribution Airbus DS © 2013 HERE

